



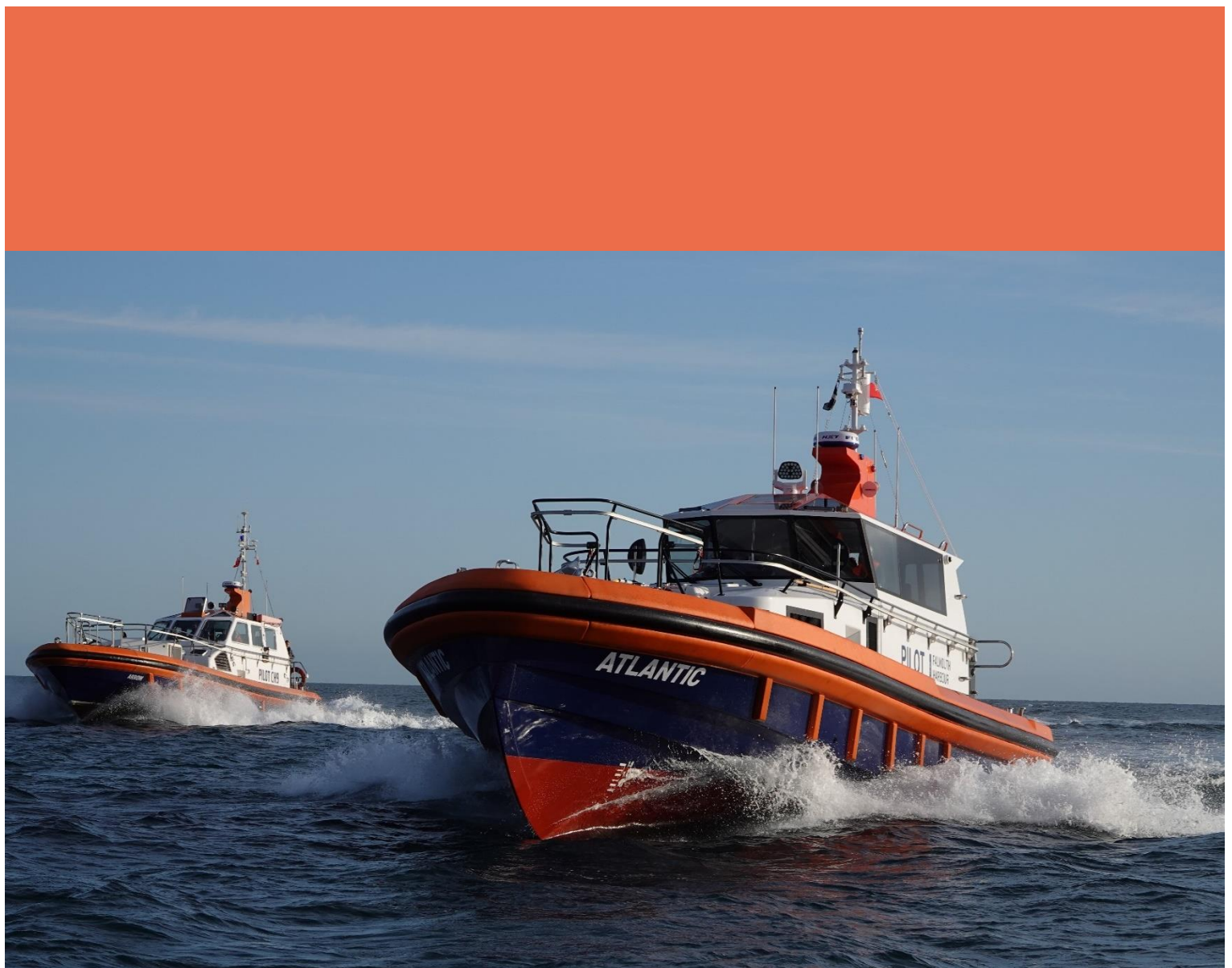
**FALMOUTH  
HARBOUR**

UK's Atlantic gateway.



**FALMOUTH  
PILOT SERVICES**

# DEEP SEA / OVERCARRIED PILOT INFORMATION PACK





# OVERVIEW

---

Falmouth Pilot Services supply safe and efficient pilotage to the Falmouth Pilotage Area, conveniently located at the entrance to the English Channel.

FPS is a service arm of Falmouth Harbour Commissioners, a Trust Port Organisation with statutory responsibility for the Falmouth Pilotage Area – This means that any surplus income generated by the organisation is utilised in the running of the Harbour and any income generated by FPS is ringfenced for the running of the service.

- FPS is a 24/7 dedicated pilotage service in staffed by full time, permanent staff.
- FPS currently operates 2x 16.6m, MECAL coded, dedicated pilot vessels, including the Atlantic, a modern dedicated pilot vessel launched in Oct 2024.
- The organization is Port Marine Safety Code compliant and FPS is ISO certified
- The office and boats are staffed 24/7, 365 days a year and are generally able to deploy a pilot boat with 1hrs notice.

## FALMOUTH IS A LONG-ESTABLISHED LOCATION FOR PILOT TRANSFERS

The area just south and southeast of the pilot station benefits from some shelter from the Lizard peninsular from the prevailing south westerly winds and Atlantic swells.

There is ample space in this area for large ships to manoeuvre to create a lee for safe embarkation / disembarkation of pilots.



# BOOKING INFORMATION ---

For Pilot Authorities, Agents and Organisations wishing to utilise Falmouth Pilot Services, please use the Deep Sea / Over Carried Pilot booking form and send to the below email address.

## CONTACT DETAILS

Email: [portoperations@falmouthharbour.co.uk](mailto:portoperations@falmouthharbour.co.uk)

Phone: (UK code +44) 01326 211395 or 07836 661668

VHF: Channel 09

## INITIAL INFO REQUIRED

- Vessel name, IMO number, LOA and draft.
- Number of pilots to embark / disembark.
- Any special requirements.

## ETA UPDATES AND ARRIVAL PLANNING

1. Email initial notification of service requirement.
2. Update any ETA updates via email at 72h, 48h, 12h and 6hrs where possible.
3. Provide as much notice as possible via VHF CH 09 followed by 1hrs confirmation.
4. Listen for instructions from the Pilot Boat Coxswain.



# INFO FOR MASTERS

---

Transfers of overcarried / deep sea pilots usually take place just outside of Port Limits and Zone Alpha (see extract), in an area to the South of the Pilot Station.

Clear and positive communications must be established between the ship and the pilot boat ahead of the transfer with a plan agreed by VHF – *including any non-typical information regarding the transfer*. VHF ch 09 must be monitored throughout the operation.

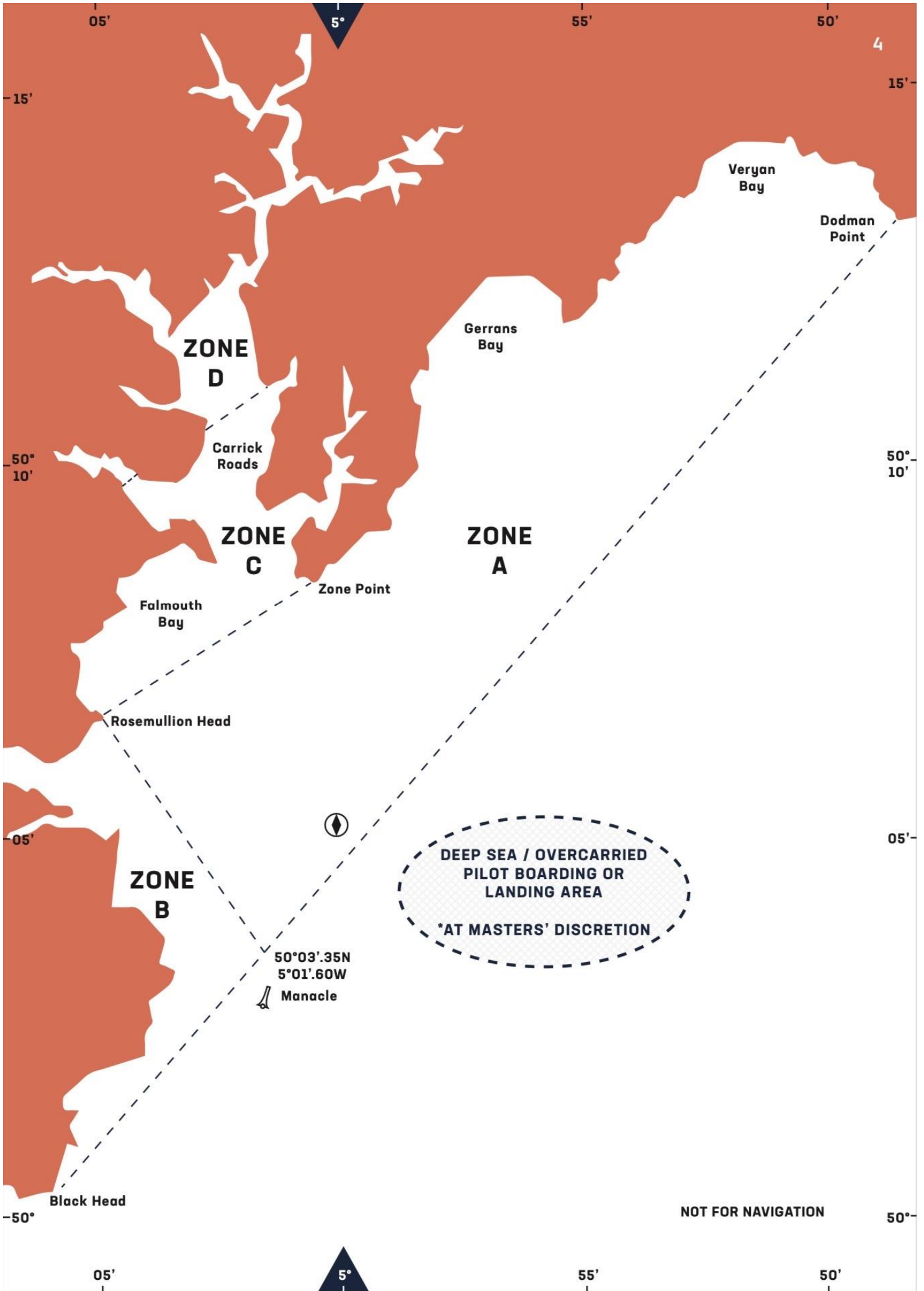
See Admiralty List of Radio Signals Volume 6 for Port and Pilotage Information, or see our website: [www.falmouthpilotservices.co.uk](http://www.falmouthpilotservices.co.uk)

## RENDEZVOUS POSITION

We ask masters to Rendezvous with our pilot vessel approx. 1 mile South or Southeast of the pilot station. SEE CHART BA 154. Exact boarding and landing positions are at the discretion of the master once in communication with the pilot boat coxswain.

Full consideration will be given to vessel size and draft as well as wind and swell conditions to enable the safe transfer of pilots.

***A master will be expected to provide a suitable lee before a transfer can take place, the Pilot Boat Coxswain may suggest an approximate course and speed based on conditions.***



# Safety Information

---

Safety is the utmost priority when Boarding and Landing overcarried / deep sea pilots.

All transfers must take place in line with The Embarkation and Disembarkation of Pilots Code of Practice. All pilot boarding arrangements must be IMO SOLAS compliant.

**The decision as to whether a transfer should take place lies with the pilot boat coxswain, the ships master and the pilot – if any party has safety concerns the transfer should be stopped and reassessed.**

## Guidance for Pilots

Pilots are expected to wear appropriate PPE as assessed by their CHA, including a lifejacket/ pilot coat and helmet. Any bags, such as rucksacks, should be transferred separately.

Clear communications between the ship and pilot boat should be made via VHF. The pilot should be aware of these communications, monitoring any instructions given by the coxswain and ideally will be carrying a handheld VHF whilst on the ships deck awaiting the transfer to maintain comms with the Pilot Boat.

The deckhand will signal when the boat is ready to receive the pilot and then endeavor to count the pilot down the last 5 steps acting as a guide for the pilot.

Once aboard the pilot boat a Hadrian's rail is available and pilots are required to pass down the outboard side of the wheelhouse as they transit to the cabin door – the pilot is to follow safety related instructions given by the pilot boat crew whilst aboard the pilot boat.

## Instances of Extreme Weather

Pilot over carries usually occur due to rough weather at their home Port. In such conditions calmer waters can often be found at Falmouth, but this is not always the case and ships can arrive in poor weather.

In these instances additional care should be taken. This includes taking time to discuss the transfer plan on the VHF. A full assessment of the situation should be made and the transfer should not be conducted until all parties are content.

Often the creation of a lee will involve a ship turning and a pilot timing their descent to the pilot boat during the window before the ships starts to roll.

***Daylight only transfers should be considered or postponing the transfer until conditions improve.***

There is also the option to bring the ship inside the shelter of Falmouth Bay, within the Falmouth Pilotage Area. The ship may be required to take a Falmouth Pilot to enter the area and costs would be incurred but this could allow the transfer to take place in extreme shelter in W and SW conditions.

# PILOT BOARDING / LANDING ARRANGEMENTS

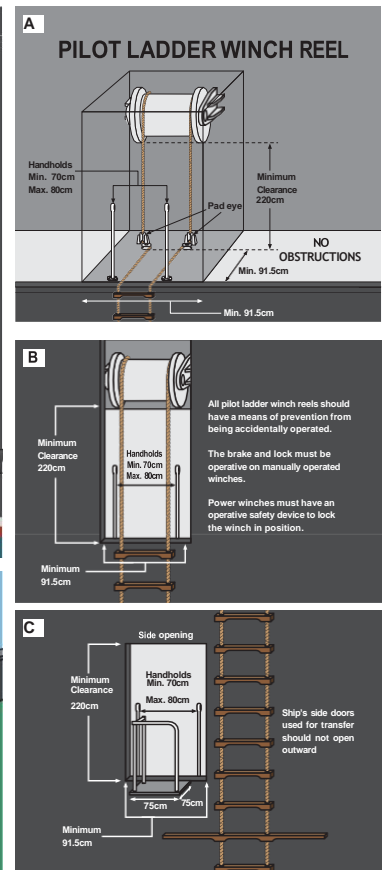
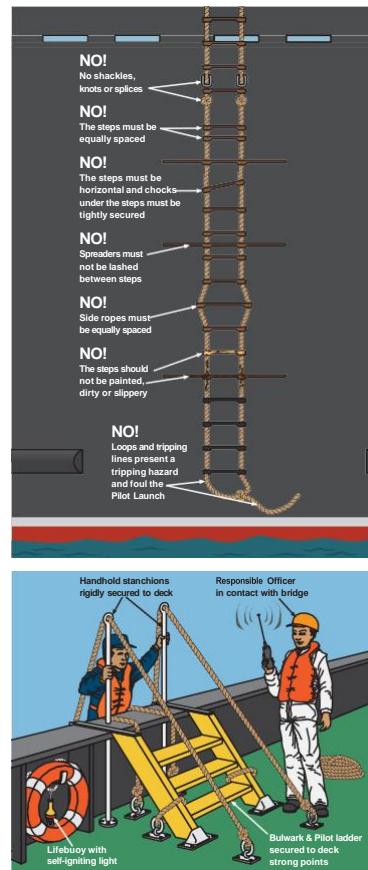
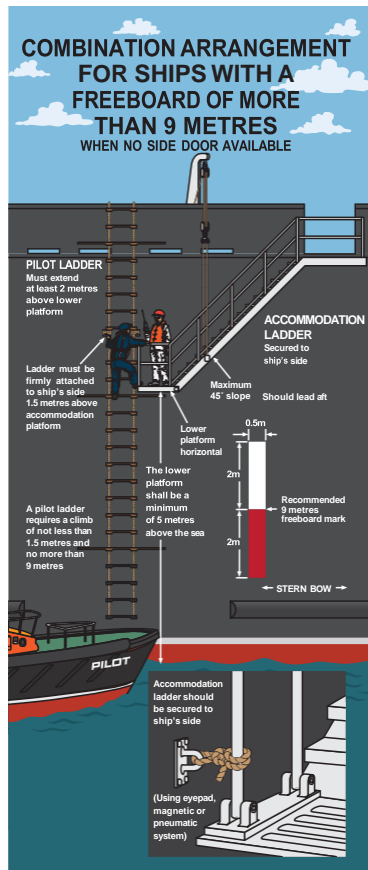
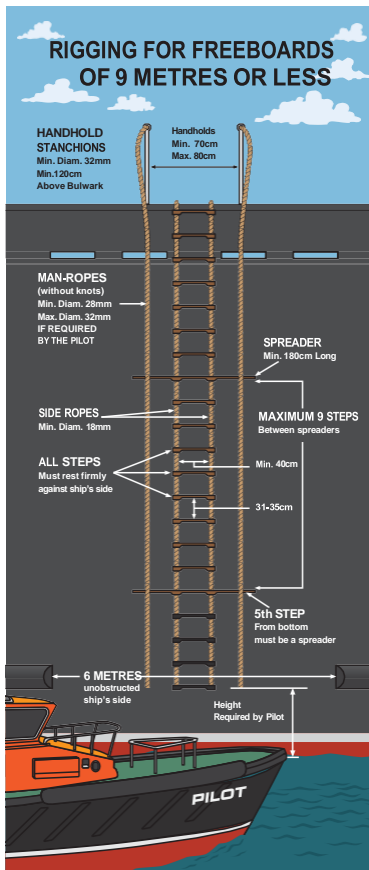
All pilot ladders and combination ladders must be rigged in accordance with IMO SOLAS requirements.

## REQUIRED BOARDING ARRANGEMENTS FOR PILOT

In accordance with SOLAS Regulation V/23 & IMO Resolution A.1045(27)

INTERNATIONAL MARITIME PILOTS' ASSOCIATION

H.Q.S. "Wellington" Temple Stairs, Victoria Embankment, London WC2R 2PN Tel: +44 (0)20 7240 3973 Fax: +44 (0)20 7210 3518 Email: office@impahq.org  
This document and all IMO Pilot-related documents are available for download at: <http://www.impahq.org>



## SUSTAINABILITY

Falmouth Harbour is environmentally conscious and has several projects underway including:

- Pilot boat efficiency and design, including the highly efficient IMO Tier 3 vessel, Atlantic.
- Future fuels including HVO.
- Seagrass regeneration / rewilding projects.
- Seawall tiles.
- Inner Harbour 'seabin' to help with the removal of plastics from the ocean.



# LOCATION, TRANSPORT AND ACCOMODATION

---

The pilot boats are based at Falmouth Haven Marina in the centre of Falmouth's Inner Harbour Waterfront. They are just a short walk from the main office with easy taxi access:

Office address: Falmouth Pilot Services, 44 Arwenack Street, Falmouth, TR11 3JQ

Pilot boat berth, what3words location: less.toast.stow

## TRAIN

Falmouth has good transport links with a mainline train route and a regional airport all within easy reach.

Falmouth Train Station is just a five-minute walk from the pilot boat berth, with trains running regularly to the main line service at Truro.

Truro Train Station offers regular trains to London, Bristol, and Exeter.

## AIRPORT

Cornwall Airport (Newquay): REGIONAL AND SOME INTERNATIONAL FLIGHTS

Exeter Airport: REGIONAL AND SOME INTERNATIONAL FLIGHTS

Bristol Airport: INTERNATIONAL AIRPORT

London Airports: INTERNATIONAL AIRPORT

# ACCOMMODATION

Falmouth is a bustling town and popular tourist destination with ample options for accommodation, here are some suggestions within walking distance of the pilot boats:

- The Seaview Inn: <https://seaviewinfalmouth.co.uk>
- The Cutty Sark: <https://cuttysarkfalmouth.co.uk>
- Headlands Hotel / Guest House: <http://headlandsfalmouth.com>
- Tregenna Guest House: <http://tregennafalmouth.co.uk>

